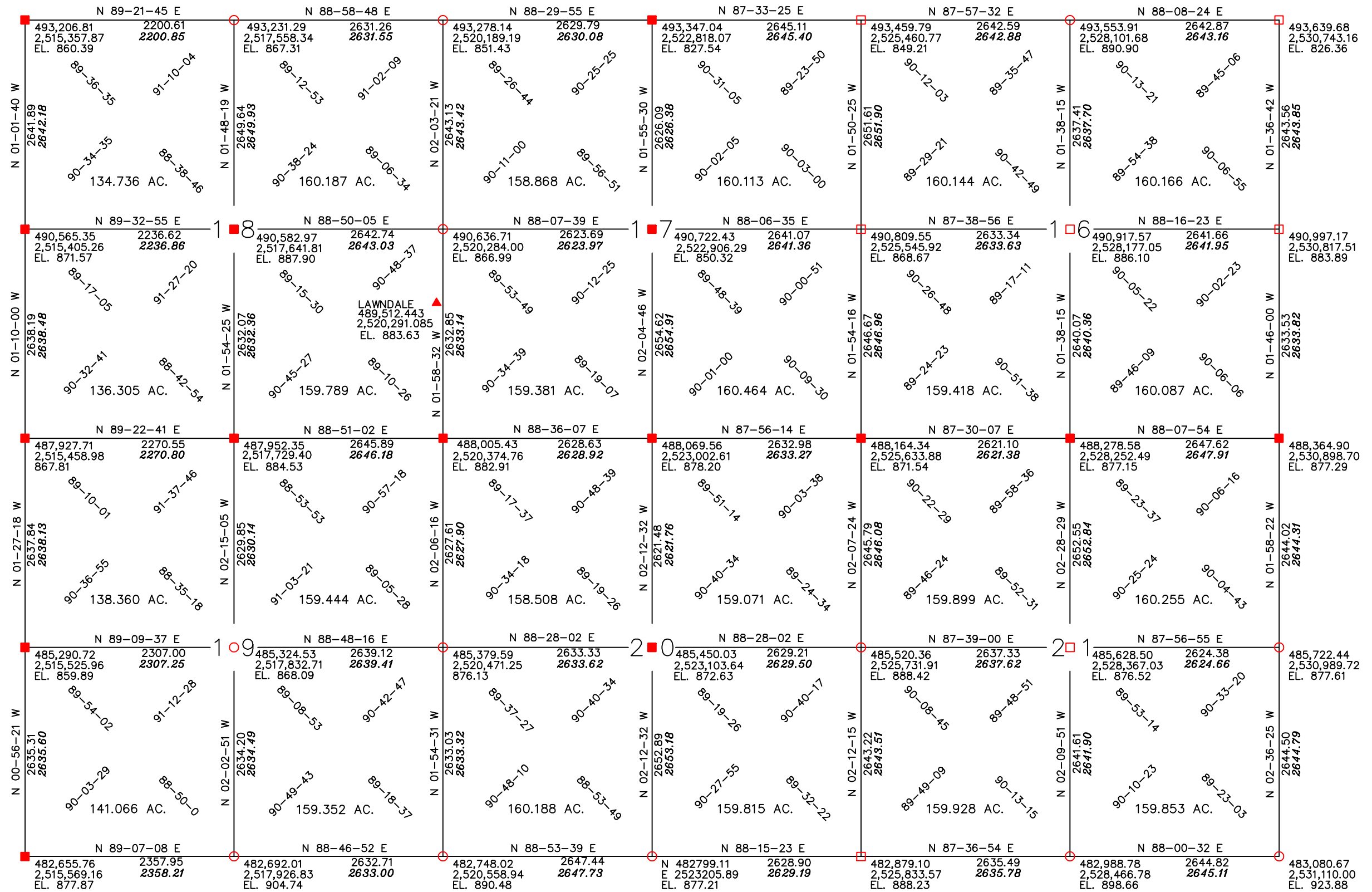


FILENAME: G:\02-00-G1\45CE06F\00SERV\21010-21 DATE & TIME LAST EDIT: 01/30/97 Time 15:15



SURVEY CONTROL WAS FUNDED IN PART BY THE WISCONSIN LAND INFORMATION BOARD.

- LEGEND**
- U.S. PUBLIC LAND SURVEY CORNER MARKED BY 6"X6"X36" SEWRPC CONC. MONUMENT WITH BRASS CAP.
  - U.S. PUBLIC LAND SURVEY CORNER MARKED BY 6"X6"X36" CONC. MONUMENT WITH BRASS CAP.
  - U.S. PUBLIC LAND SURVEY CORNER MARKED BY OTHER MONUMENTATION.
  - △ N. G. S. HORIZONTAL CONTROL STATION.



HORIZONTAL DATUM IS BASED ON THE WISCONSIN STATE PLANE COORDINATE SYSTEM GRID, SOUTH ZONE, AND ALL BEARINGS ARE REFERRED TO GRID NORTH.  
 COMBINATION SCALE AND SEA LEVEL REDUCTION FACTOR: .99989139  
 DIMENSIONS SHOWN IN ITALICS INDICATE GROUND LEVEL DISTANCES.  
 VERTICAL DATUM IS BASED ON MEAN SEA LEVEL, 1929 ADJUSTMENT.  
 ▲ OZAUKEE COUNTY G.P.S. STATION

CONTROL SURVEY SUMMARY DIAGRAM  
 FOR  
 SECTION SURVEYS  
 IN THE  
 TOWN OF CEDARBURG  
 OZAUKEE COUNTY, WISCONSIN

DRAWN BY: R. KHAYTINA	DATE: DEC. 1996
CHECKED BY: K. KRUGER	DATE: DEC. 1996
APPROVED BY: G. SCHNEIDER	DATE: DEC. 1996
REVISED:	DATE:

DOSSIER SHEETS CONTAINING ALL INFORMATION NECESSARY FOR RECOVERY AND USE OF CONTROL SURVEY STATIONS AVAILABLE FROM OZAUKEE CO.

SECTIONS  
 16,17,18,  
 19,20,21  
 T. 10 N. R. 21 E  
 OZAUKEE  
 COUNTY